

Design Your Awning



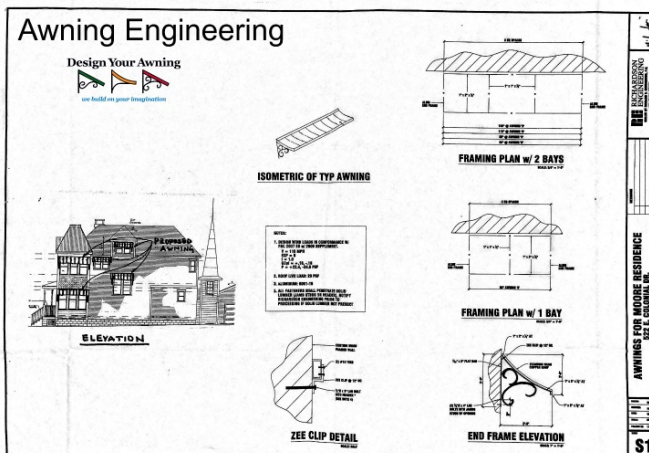
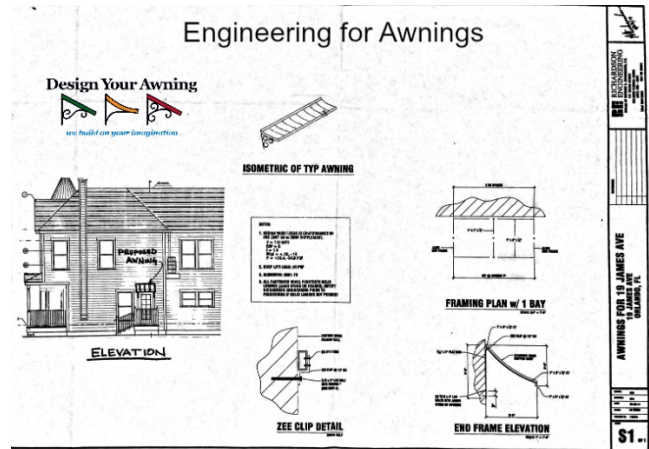
we build on your imagination

Engineering Information

The awnings by Design Your Awning have been engineered and tested to withstand strong winds as well as heavy snow loads. We only sell awnings with superior materials and installation hardware. The all-aluminum construction means a lifetime of service without rusting or corroding. Our awnings have strong frames that have structural aluminum that is powder coated for a lifetime finish. This kind of engineering has made them able to remain strong when the winds blow in excess and your town experiences heavy snowfall.

Our awnings have been Miami - Dade County approved.

These engineered canopies have been designed to withstand every condition across the country including high snow drift loading and hurricane force winds. Our canopies have evolved to include a wide variety of profiles, shapes, curves and an almost unlimited color palette in any architectural finish.



Design Your Awning



we build on your imagination

NOTES:

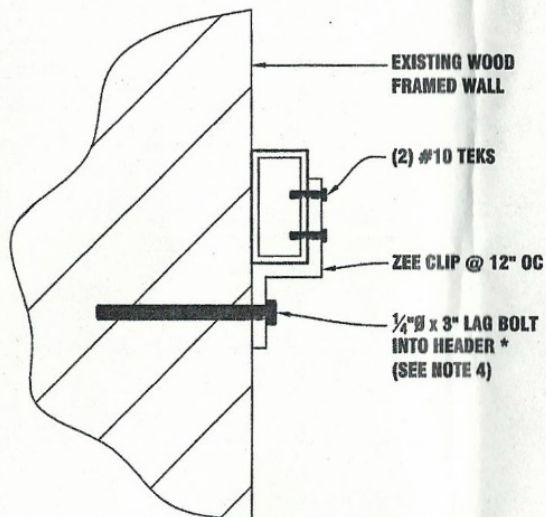
**1. DESIGN WIND LOADS IN CONFORMANCE W/
FBC 2007 ED w/ 2009 SUPPLEMENT.**

V = 110 MPH
EXP = B
I = 1.0
GCpi = +.18, -.18
P = +22.4, -34.6 PSF

2. ROOF LIVE LOAD: 20 PSF

3. ALUMINUM: 6061-T6

**3. ALL FASTENERS SHALL PENETRATE SOLID
LUMBER (JAMB STUDS OR HEADER). NOTIFY
RICHARDSON ENGINEERING PRIOR TO
PROCEEDING IF SOLID LUMBER NOT PRESENT**



ZEE CLIP DETAIL

SCALE: HALF

